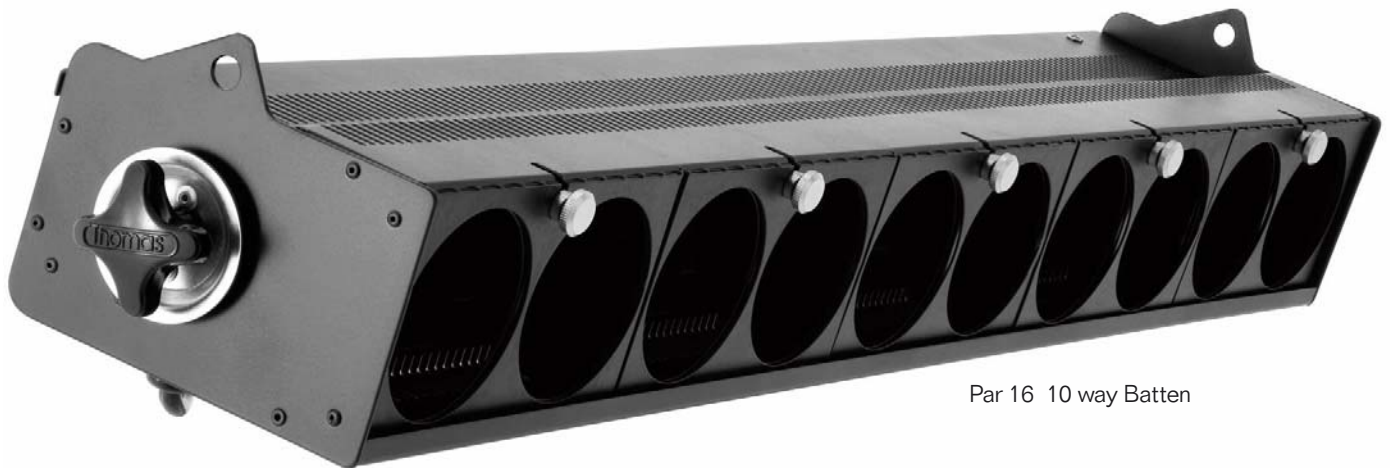
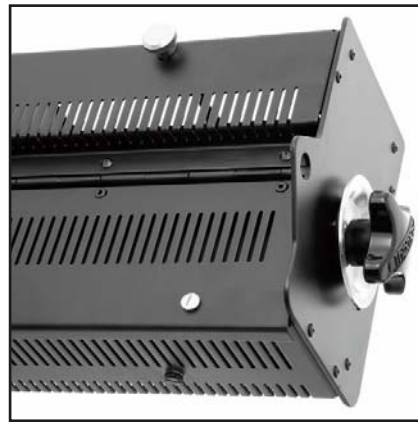


□ PAR16 BATTENS



Par 16 10 way Batten

The Par 16 Batten is designed to use MR16-12V lamps and the GU10 range of 230V lamps. Manufactured in aluminium for a robust yet lightweight construction and finished in a black electrostatic paint finish. The unit has extremely good ventilation to aid bulb life and colour frame has been kept as far away as possible to prolong gel life. Printed circuit board complete with lampholders and lamp failure neons, ensures reliable operation with minimum of maintenance. Colour frames are in pairs with quick release knobs. Bulb changes are simple with quick release catches and slide in lampholders. All these features make this unit extremely user friendly. Supplied standard with one pair of floor plates and colour frames.



Part Code	Description	colour	weight(kg)	size l-w-h(mm)
D1611	Par 16 - 10 way Batten 1 circuit series wired c/w Floor Plates	Black	6.00	1040x110x180
D1621	Par 16 - 20 way Batten 1 circuit series wired c/w Floor Plates	Black	12.0	2000x110x180
D1622	Par 16 - 20 way Batten 2 circuits series wired c/w Floor Plates	Black	12.0	2000x110x180
C1610	Par 16 - 10 way Batten Yoke	Black	4.00	1050x250x30
C1620	Par 16 - 20 way Batten Yoke	Black	6.00	2000x250x30
D1692	Par 16 Twisted Batten Hangers	Black	2 per pair	250x50x20
C1630	Par 16 - 20 way Batten Floor Plate per pair	Black	1.00	200x200x30
P8001	12 volt Batten Lampholder			
D1649	Par 16 Batten Twin Colour Frame	Black	0.09	188w x 107h
D1610	Par 16 - 10 way mains voltage Batten 1 circuit c/w Floor Plates	Black	6.00	1040x110x180
D1620	Par 16 - 20 way mains voltage Batten 2 circuit c/w Floor Plates	Black	12.0	2000x110x18
P8010	230 volt Batten Lampholder			